



DS INSTRUMENTS

WWW.DSINSTRUMENTS.COM

MX3000PRO R5 – USB 30GHZ INTEGRATED-LO WIDEBAND MICROWAVE MIXER



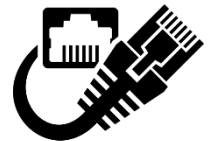
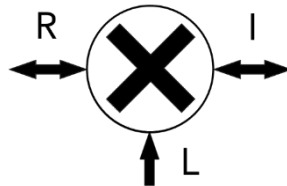
Up-converting, down-converting, or general-purpose microwave mixer with programmable local oscillator and stand-alone controls.

- MX3000PRO Specifications -

- Integrated **18–30GHz** Local Oscillator
- Mixer RF frequency range: **14-30GHz**
- Mixer IF frequency range: **10-8000MHz**
- Low conversion loss: **9-13dB** typical
- Typical return loss: >8dB
- Typical IP3: 20dBm
- Input P1dB: +10dBm
- Typical LO to RF isolation: 45dB
- Typical LO to IF isolation: 35dB
- Phase noise: 30GHz @ 10KHz: **-90dBc**
- Max RF input power: **+17dBm**
- Port impedance: 50 Ohm
- Reference source stability: **±10ppb**

- 2024 REV 5 Mixer Features -

- Up and down-converting
- Internal LO harmonic filtering
- Dual USB-C power inputs
- Compact & rugged metal enclosure
- Bright and efficient OLED display
- Adjustable LO power
- Internal 10MHz reference - OCXO
- External MCX reference input
- Precision 2.92mm RF and SMA IF ports
- Included PC control software
- Simple and effective control interface
- Industry-standard Virtual COM Port
- **Ethernet** port for network control



High current blue USB 3.0 ports are recommended for reliable operation.



Visit us for control software and tech support:

www.dsinstruments.com/downloads

Thanks for your business!

