

### Product features

Broadband, adjustable attenuation value.

### Main specifications

Parameters	Min	Typical	Max	Units
Frequency	DC	~	6	GHz
Adjustable attenuation	1	~	90	dB
step		1		dB
VSWR			1.85	
IL			2	dB

### Other parameters

Power Capacity	2W Design assurance
Impedance	50Ω
Connector	SMA-F
Product shell material	Aluminum
Operation Temp.	-20~+85°C Design assurance
Other	Manual knob adjustment

### Attenuation accuracy

	Attenuation	Attenuation accuracy
1	1- 10dB	±0.6dB
2	11-60dB	±0.9dB
3	61-70dB	±1.5dB
4	71-90dB	±2.5dB

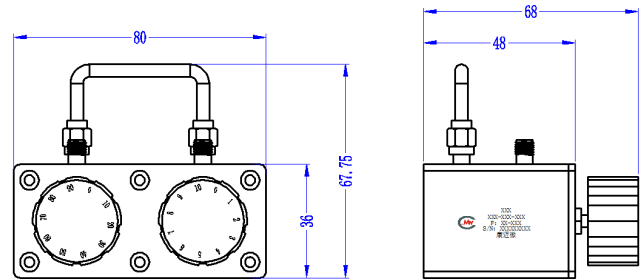
### Note

- When installing attenuators, it is necessary to consider sufficient heat dissipation space and avoid installing them next to equipment with high heat output, otherwise the power capacity will decrease;
- Small power attenuators do not have input and output directions, nor do they indicate directions. When high-power attenuators have input and output port markings, they must be connected to the equipment in the specified direction, otherwise the attenuator may burn out.

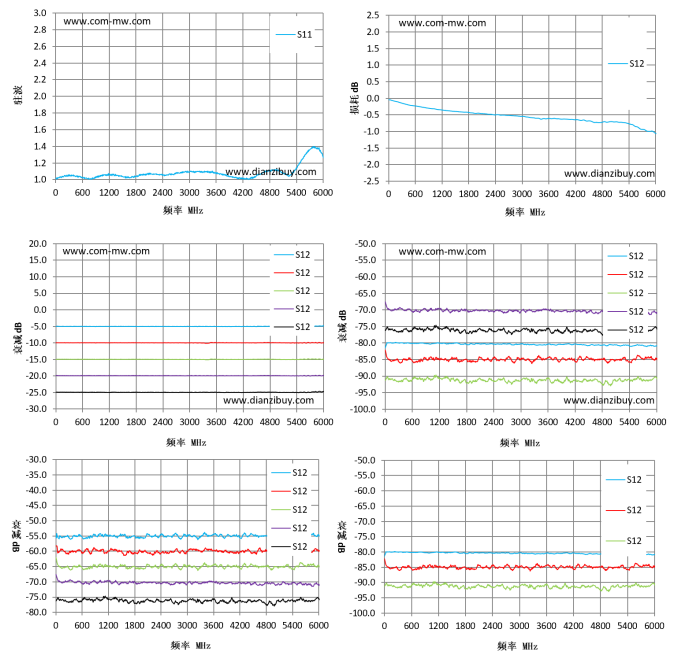
### Reference picture



### Configuration(mm)



### Typical test curve



Note: The specifications and performance data contained in this data sheet are based on tests established by CMW.